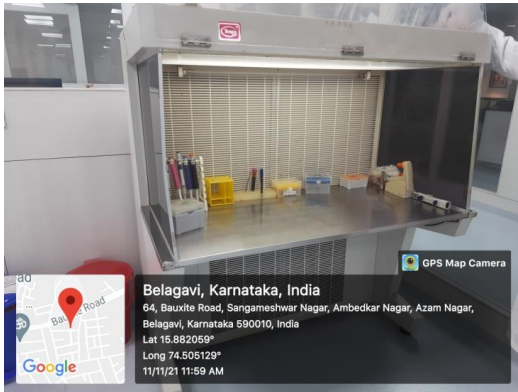


**Maratha Mandal's Nathajirao G Halgekar Institute of Dental Sciences & Research
Centre, Belagavi**

Geo tagged photographs of Facilities and Innovations made at Institute

Microbiology setup

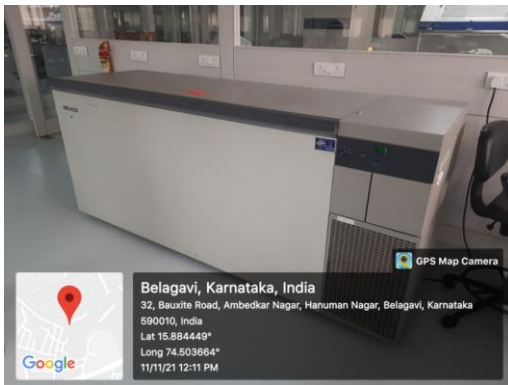
Laminar flow



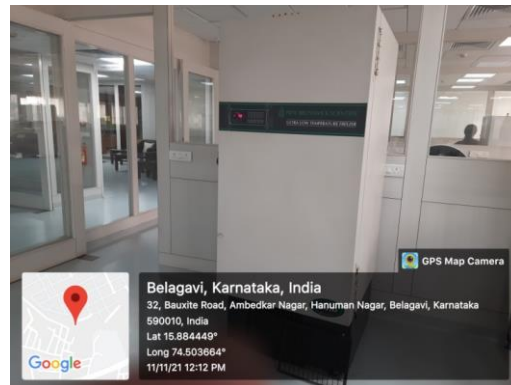
Anaerobic chamber



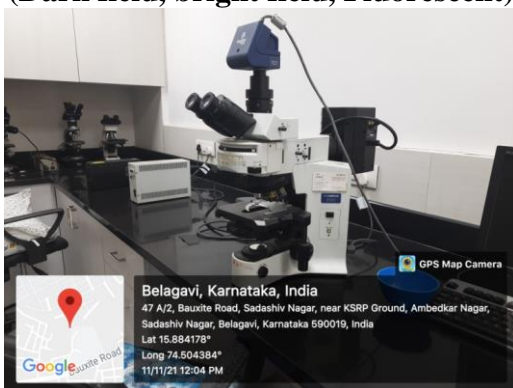
Refrigerator for storing sample



-80 degree Refregirator



**Research Microscope with attachments
(Dark field, bright field, Fluorescent)**



Confocal Microscope



Cryocans for storage of cell lines



Laminar flow



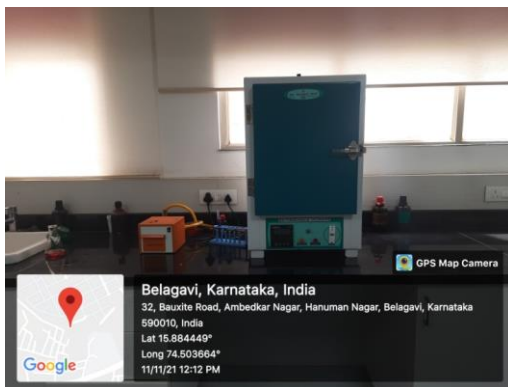
Laminar flow



Co2 Incubator



Incubator for culture



Flow Cytometry



Sterilization



PCR Machine



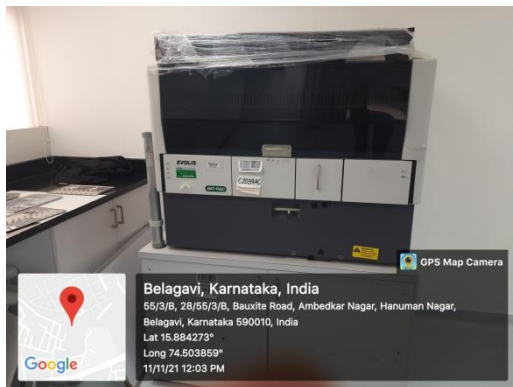
Gel Electrophoresis



HPLC Unit



ELISA Station



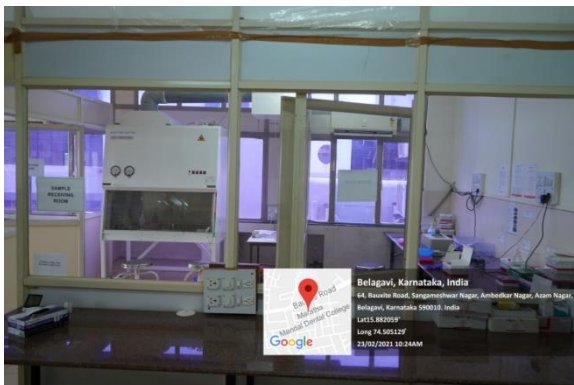
Centrifuge



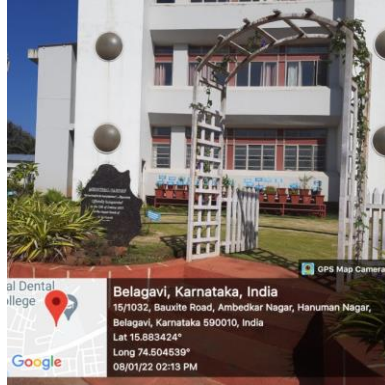
Freezer for Storage



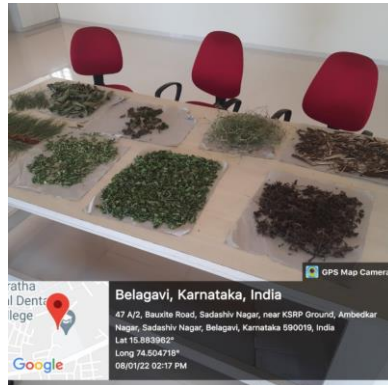
COVID Testing Laboratory



Medicinal Garden



Drug Discovery Laboratory



Animal House

